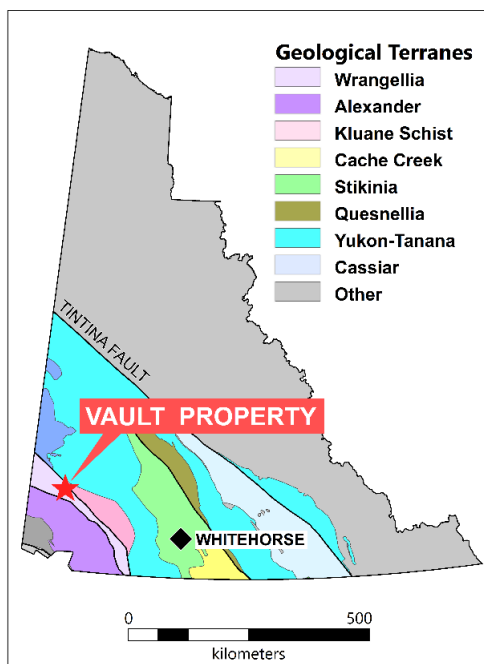


# VAULT PROPERTY

Undrilled Orogenic Gold Prospect

- **Extremely anomalous gold soil geochemistry (1 to  $\geq$  than 10 g/t) in the headwaters of productive placer creeks**
- **Undrilled orogenic prospect, less than ten kilometres from a paved highway**
- **Limited prospecting has yielded rock samples grading up to 8.27 g/t gold**



**FIGURE 1 – GEOLOGICAL SETTING**

Strategic Metals Ltd.'s wholly-owned Vault property is located in southwestern Yukon. It covers the headwaters of two productive placer creeks and is highly prospective for orogenic gold mineralization. In recent years, the Yukon has been host to a number of significant orogenic gold discoveries, such as Goldcorp Inc.'s Coffee Deposit, White Gold Corp's White Gold deposit, and Golden Predator Mining Corp.'s 3 Aces project. The Vault area is similar to other orogenic gold districts in the territory, but has not received the same level of exploration.

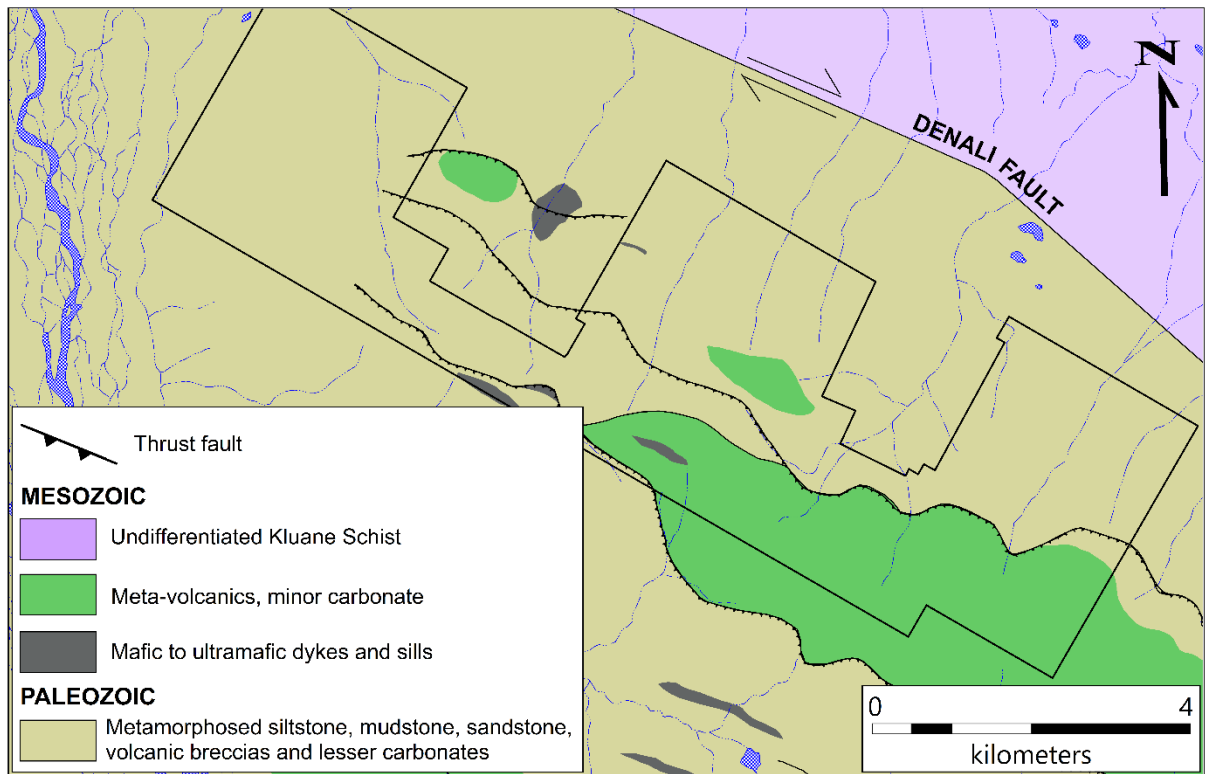
The property is situated close to infrastructure, less than ten kilometres southwest of the Alaska Highway and five kilometres northwest of the past-producing Wellgreen Mine, a nickel-copper-PGE deposit owned by Wellgreen Platinum Ltd. It comprises 180 contiguous quartz claims that cover an area of approximately 35.9 km<sup>2</sup>.

While there is a long history of placer gold exploration in the Vault area, dating back to 1903, hard rock exploration has been minimal. Placer gold recovered from short, steep, glaciated creeks draining the



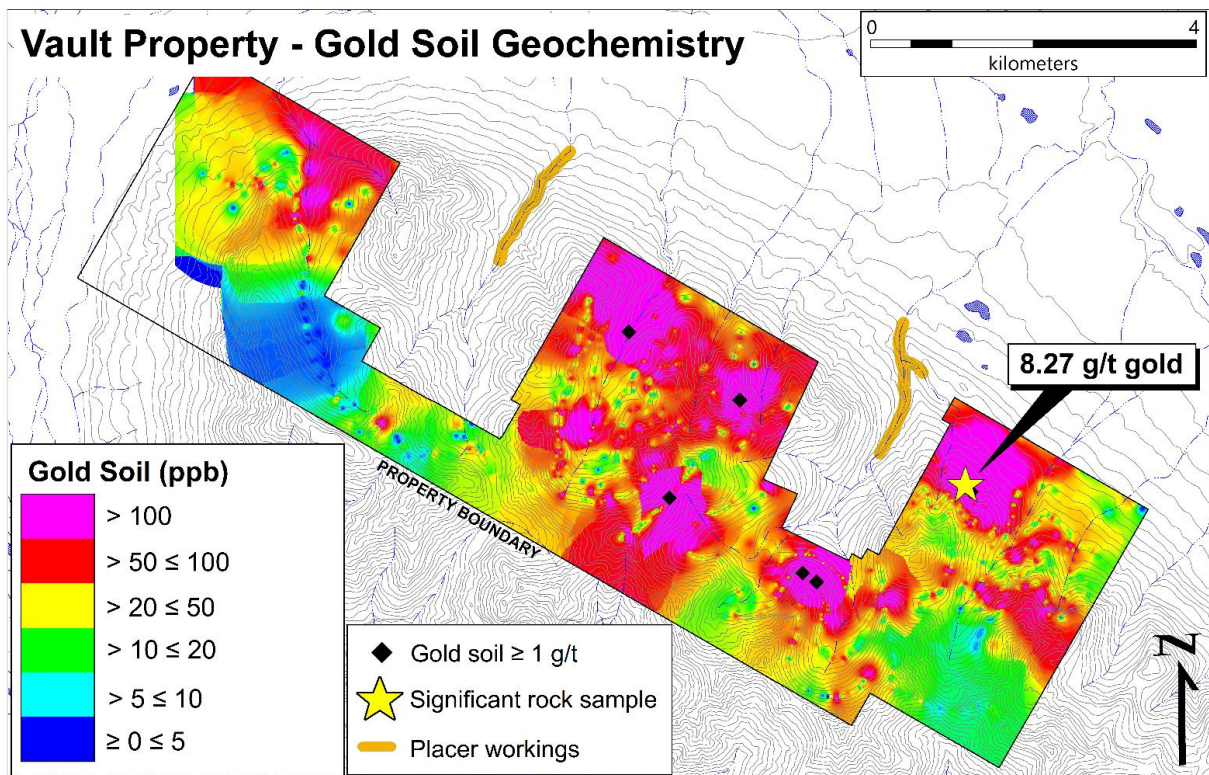
**LOOKING NORTHEAST FROM VAULT TOWARD THE ALASKA HIGHWAY**

property is coarse, angular and frequently attached to quartz, suggesting a local source. Some of the historical gold was reportedly collected from decayed outcrop.



**FIGURE 2 – SIMPLIFIED PROPERTY GEOLOGY**

The Vault property is underlain by greenschist facies meta-sedimentary and meta-volcanic rocks of Wrangellia Terrane. The Denali Fault, a major dextral strike-slip fault, is located about two kilometers northeast of the property. Several northeast-verging folds and recessive weathering thrust faults have



**FIGURE 3 – GOLD SOIL GEOCHEMISTRY**

been recognized on the property. These structures are aligned sub-parallel with the Denali Fault and are likely associated with gold mineralization.

Contour soil sampling has recently identified large areas of extremely anomalous gold geochemistry, with several samples ranging from 1000 to >10,000 ppb gold. The property has never been drill tested and has seen only cursory prospecting. A rock sample, collected in fall 2017 from a 40 cm by 40 cm talus boulder, assayed **8.27 g/t gold**. This sample comprised rusty quartz with minor pyrite and limonite, hosted in sericite-altered phyllite.

In the last decade, exciting orogenic gold discoveries have been made within greenschist facies rocks in various parts of the Yukon. The geology and geochemistry of the Vault property shows strong affinities with the orogenic model in an area that has received little exploration for this very productive deposit type.

Updated January 2018

---

### FOR MORE INFORMATION ON THIS PROPERTY

Contact Richard Drechsler  
Phone: 604 687 2522  
Email: [rdrechsler@strategicmetalsltd.com](mailto:rdrechsler@strategicmetalsltd.com)

Doug Eaton  
Phone: 604 688 2568  
Email: [info@nordacres.com](mailto:info@nordacres.com)  
[www.strategicmetalsltd.com](http://www.strategicmetalsltd.com)

