

SAYYEA PROPERTY

Huge multi-element skarn

- An excellent multi-element bulk tonnage prospect with open pit potential
- Main Skarn Horizon traced by soil geochemistry for a 7000 m strike length
- Extraordinary soil geochemistry anomaly – up to 2500 ppm tungsten, 1650 ppb gold, 152.5 ppm tin, 5440 ppm zinc and 284 ppm copper

The Sayyea property hosts thick, laterally continuous skarn horizons with potential for various metals – especially tungsten. It is owned 100% by Strategic Metals Ltd. and is not subject to any underlying royalty interests.

The project encompasses 198 mineral claims (40 sq km) located 65 km north of Rancheria on the Alaska Highway. Rancheria is 120 km west of the town of Watson Lake (Figure 1).

The Sayyea property is underlain by the Upper Proterozoic to Lower Cambrian Ingenika Group metasedimentary rocks, which are intruded by the Mid-to-Late Cretaceous Cabin Creek Stock.



SAYYEA PROPERTY LOOKING NORTH – NOTE THE LACK OF OUTCROP EXPOSURE AND HEAVY VEGETATION

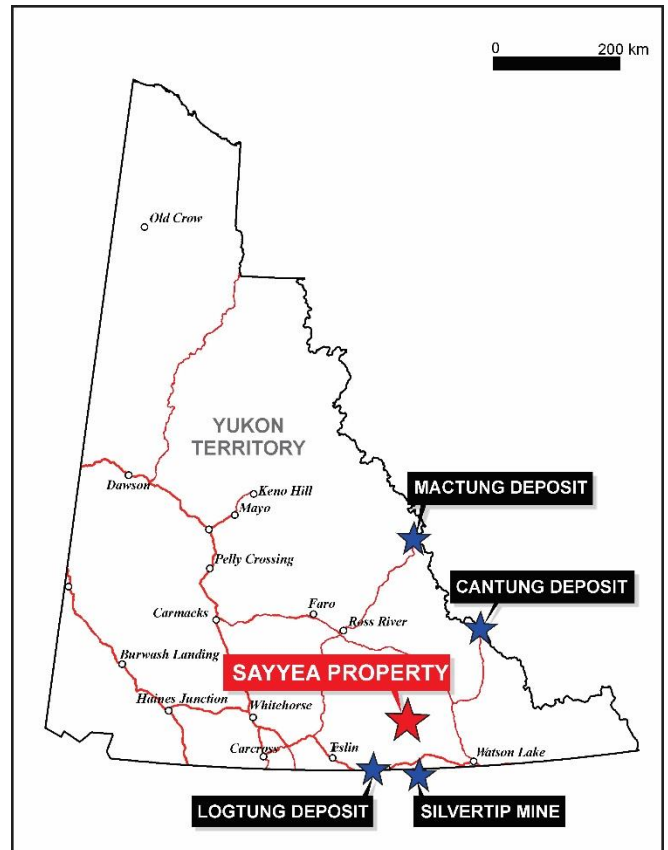


FIGURE 1: LOCATION MAP

Metasomatism near the intrusive contact has produced laterally extensive skarn horizons of four types: garnet-pyroxene-quartz-calcite±tremolite±pyrrhotite±scheelite; pyroxene-quartz; pyroxene-quartz±calcite±pyrrhotite±scheelite; and, garnet±quartz±calcite±pyroxene. Quartz veined, greisen zones containing wolframite and molybdenite are developed within the marginal facies of the intrusion.

Prospecting has been frustrated by thick vegetation and limited bedrock exposure. The best chip sample yielded 0.69% tungsten over 1.1 m. Grab samples returned up to 1030 ppm tin and 2.06 g/t gold. No drilling or trenching have been done, and no prospecting has been done to follow up the highly anomalous zinc values.

Soil geochemistry has delineated the Main Skarn Horizon along a 7000 m strike length (Figures 2 and 3). There is noticeable zonation of geochemical values along this horizon, with the highest values for tungsten (up to 2500 ppm), tin (up to 152.5 ppm) and gold (up to 1650 ppb) in the center nearest to the intrusion and the strongest zinc (up to 5440 ppm) and copper (up to 284 ppm) values more distally to the west.



TYPICAL BEDROCK EXPOSURE ON THE MAIN SKARN HORIZON

Recommendations: The Main Skarn Zone at the Sayyea property is modeled as a bulk-tonnage, open pit prospect. Future work should systematically evaluate its size and grade continuity using either: a) mechanized trenching or b) track-mounted reverse circulation drilling.

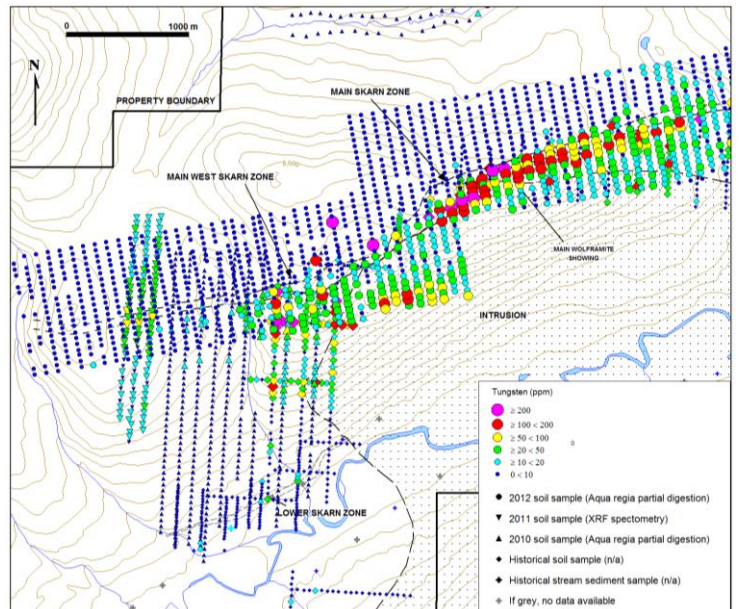


FIGURE 2: TUNGSTEN GEOCHEMISTRY

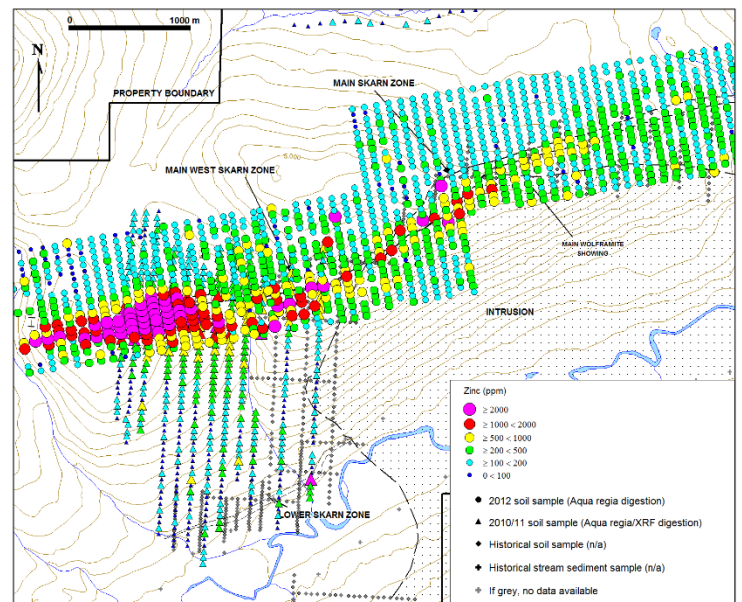


FIGURE 3: ZINC GEOCHEMISTRY

FOR MORE INFORMATION OF THIS PROPERTY

Contact Richard Drechsler
 Phone: 604 687 2522
 Email: rdrechsler@strategicmetalsltd.com

Doug Eaton
 Phone: 604 688 2568
 Email: info@nordacres.com
www.strategicmetalsltd.com

