

# BYNG PROPERTY

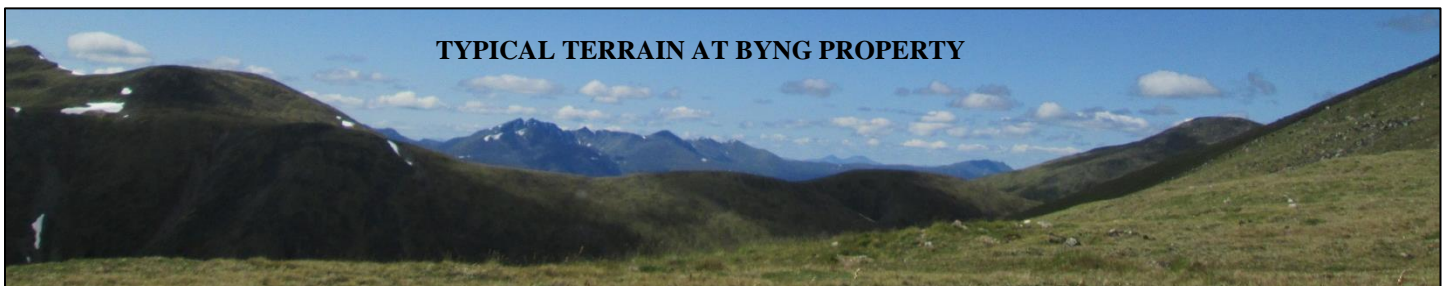
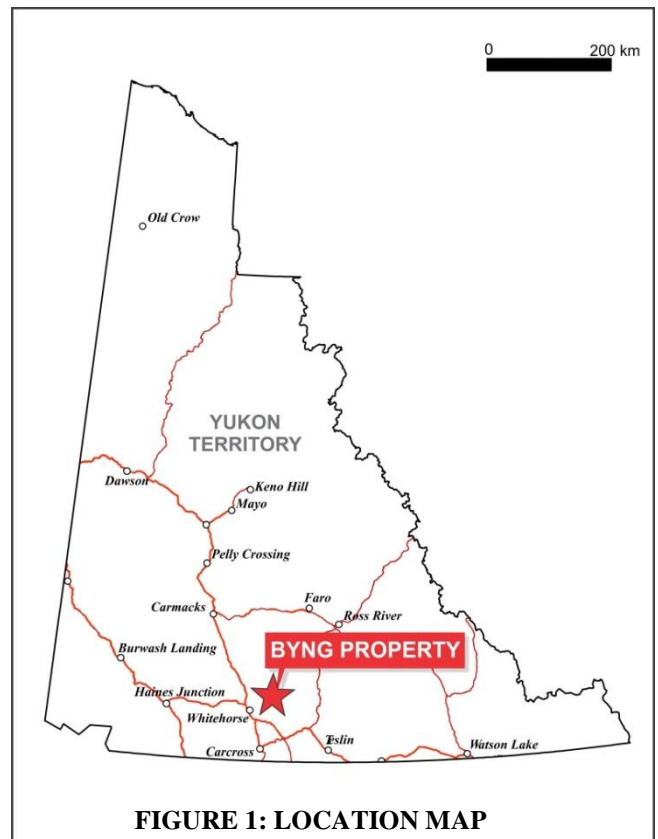
Undrilled, gold-silver-copper, low sulphidation epithermal vein prospect

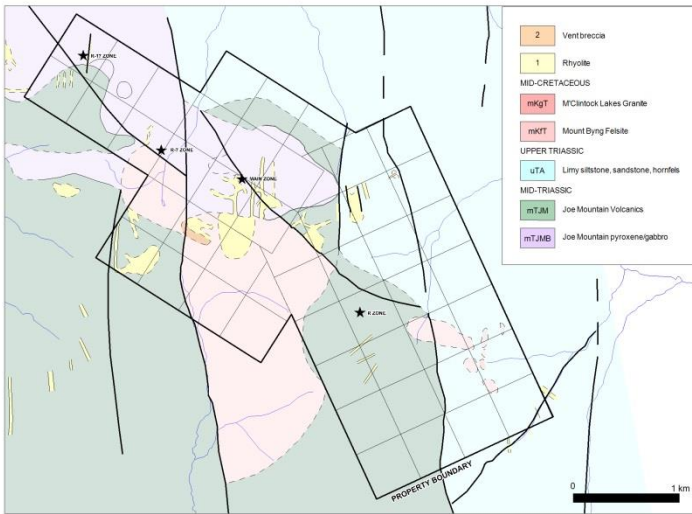
- A precious metal rich, low sulphidation epithermal vein prospect in the highly prospective Stikinia Terrane
- Four known mineralized zones with rock values up to 126.9 g/t gold, 164 g/t silver and 6.53% copper
- Widespread gold and pathfinder element soil anomalies including peak values of 1770 ppb gold, 30 ppm silver, 3420 ppm arsenic, 517 ppm copper and 69.4 ppm molybdenum

The Byng property hosts gold±silver±copper rich mineralization with low sulphidation epithermal type affinity. It is owned 100% by Strategic Metals Ltd. and is not subject to any underlying royalty interests. The property encompasses 50 mineral claims (10 sq km) located 50 km northeast of Whitehorse in southern Yukon (Figure 1). The claims lie within the traditional territory of the Teslin Tlingit Council.

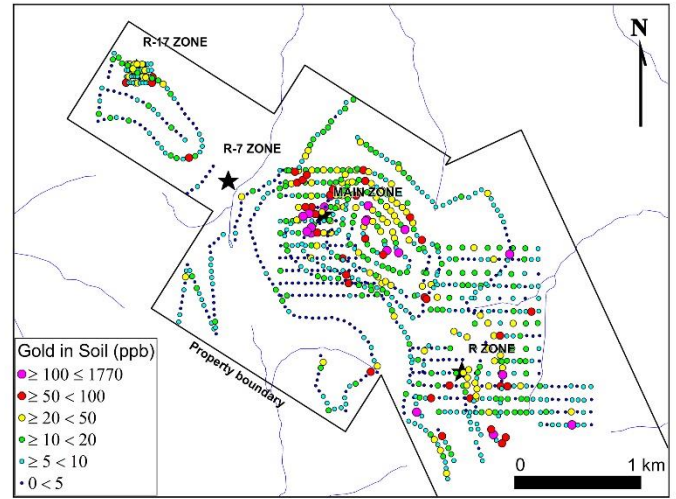
The property lies within a package of Triassic volcanics and Mid-Cretaceous high level intrusive rocks, which are cut by younger intrusions and numerous large and complex faults (Figure 2). This package is favourably located within Stikinia Terrane, which hosts several epithermal gold-silver deposits in the Golden Triangle of northern British Columbia. The property lies entirely above treeline and is characterized by gentle to moderate terrain.

Historical prospecting on the property identified four gold-bearing zones that lie along a 3500 m trend. Gold occurs with more localized silver and copper in brecciated quartz-carbonate veins, which are associated with rhyolite dykes and faults. Significant assays include: 126.9 g/t gold, 164 g/t silver and 6.53% copper.





**FIGURE 2: PROPERTY GEOLOGY**



**FIGURE 3: GOLD-IN-SOIL**

Grid and contour soil sampling completed on the property intermittently since 1986 has returned many elevated gold-in-soil values with strong silver, arsenic, copper and molybdenum support (Figure 3). Peak values include: 1770 ppb gold, 30 ppm silver, 3420 ppm arsenic, 517 ppm copper and 69.4 ppm molybdenum. Numerous samples with strongly elevated values for all elements of interest (including the peak values for silver, arsenic and molybdenum) are not coincident with known mineralization and have yet to be followed up.



**PHOTO ABOVE: MAIN ZONE (NEAR PEAK) AND R ZONE (MIDDLE PEAK)**

**Recommendations:** Prior to drill testing, more grid soil sampling, follow-up prospecting, detailed geological mapping and hand trenching, should be conducted to better define known veins and to explore for new mineral occurrences.

Primary Reference: Data Compilation and Digitization at the Byng Property; Assessment Report for Strategic Metals Ltd., K. Willms, November 2016.

Updated January 2, 2018

**FOR MORE INFORMATION ON THIS PROPERTY**



Contact Richard Drechsler  
 Phone: 604 687 2522  
 Email: [rdrechsler@strategicmetalsltd.com](mailto:rdrechsler@strategicmetalsltd.com)

Doug Eaton  
 Phone: 604 688 2568  
 Email: [info@nordacres.com](mailto:info@nordacres.com)  
[www.strategicmetalsltd.com](http://www.strategicmetalsltd.com)