

HARTLESS JOE

Bonanza grades, visible gold

- Chip sample highlights of: 60 g/t gold and 554 g/t silver over 1.2 m at the King Showing; 462 g/t gold and 79.6 g/t silver over 0.4 m at the Queen Showing; and, 9.57 g/t gold over 2.0 m at the Grumpy Showing
- Similar geological setting to deposits in British Columbia’s prolific Golden Triangle

The 100% owned Hartless Joe property covers high-grade gold-silver mineralization in southern Yukon. It is located within Stikinia, an island-arc terrane that extends through northern British Columbia into Yukon (Figure 1). In British Columbia, the Golden Triangle district of Stikinia hosts several gold-rich epithermal vein, exhalite and porphyry deposits, including the Brucejack, Premier, Eskay Creek and Red Chris mines.

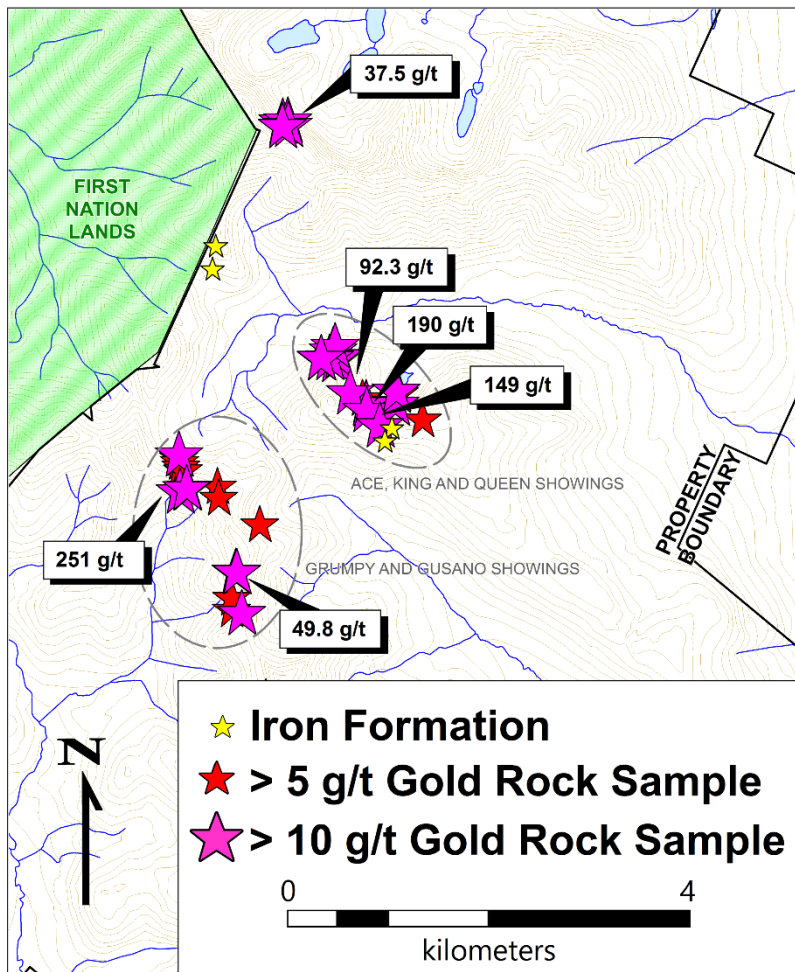


FIGURE 2 – HARTLESS JOE GOLD BELT

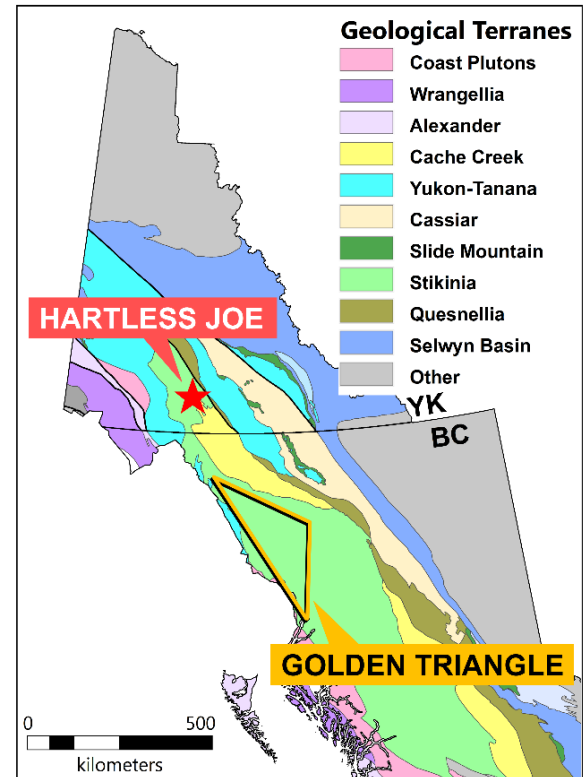


FIGURE 1 – TECTONIC SETTING

The Hartless Joe property covers a 6.5 km by 3.5 km belt of high-grade gold±silver showings. Mineralization occurs in steep quartz veins along faults and in stratabound, banded and/or comb-textured quartz horizons adjacent to altered volcanic sills or flows, within inter-volcanic mudstones. Sulphide minerals comprise galena, sphalerite, chalcopyrite and pyrite, along with native gold. Algoma-type iron formations have been identified on the property, consisting of siliceous, hematite-magnetite mineralization in bands or as clasts within volcanic conglomerates. The formations are formed as



HAND SAMPLE FROM THE DISCOVERY OUTCROP

and **0.35% copper over 1.2 m**. Follow-up trenching in 2016 returned **44.3 g/t gold, 375 g/t silver, 2.04% lead and 0.14% copper over 2.10 m** from another exposure, 82 m along strike from the discovery outcrop.

The Queen Showing was discovered in 2016 near a ridge top and has been traced for 25 m along strike before being covered by talus. A continuous chip sample from the Queen Showing returned **462 g/t gold, 79.6 g/t silver, 1.02% lead and 0.28% copper over 0.40 m**.

Diamond drilling at the Hartless Joe property in 2016 totaled 367.3 m, with five holes from a single site at the King Showing and one hole at the Queen Showing. Drill holes intersected weakly silicified sediments containing disseminated, banded and fracture filling sulphides, down-dip of mineralized exposures. Gold assays were disappointing, with a maximum of 1.57 g/t over 2.78 m in hole HAR-16-001.

Recent work has focused on the southern part of the precious metal belt, in the area of the Grumpy and Gusano showings, where rock samples have yielded up to **251 g/t gold and 5010 g/t silver**. In 2018, hand trenching at the Grumpy Showing exposed mineralized quartz within a steeply-dipping fault zone, which returned **9.57 g/t gold over 2 m**. A 2019 drill hole (HJ-19-01), targeting the down-dip extension of the trench exposure, successfully intersected the mineralized fault and returned strongly anomalous values for gold. Hole HJ-19-04, which was collared 50 m to the east of the first hole, and also designed to cross the fault, failed to reach the target. Hand trenching in 2018 at the Gusano Showing exposed a shallowly-dipping siliceous horizon, which yielded **1.31 g/t gold over 7 m**. Follow-up drilling in 2019 at Gusano returned **2.68 g/t gold over 1.7 m**, including **5.80 g/t gold over 0.61 m** from the silicified zone (HJ-19-03); and **1.86 g/t gold over 4.78 m**, including **3.88 g/t gold over 1.61 m**, from the fault zone (HJ-19-04).

hydrothermal precipitates, suggesting that the precious metal occurrences at Hartless Joe occur within a mixed epithermal – submarine volcanogenic setting.

In 2015, Strategic discovered a high-grade quartz-rich band that is either an exhalite horizon or a flat-lying vein. This band, referred to as the King Showing, is located on the lower slopes of an alpine valley, within a 500 by 250 m area containing scattered mineralized talus and strongly elevated gold and copper soil geochemical values. A continuous chip sample taken across the discovery outcrop in this area graded **60 g/t gold, 554 g/t silver, 5.01% lead,**

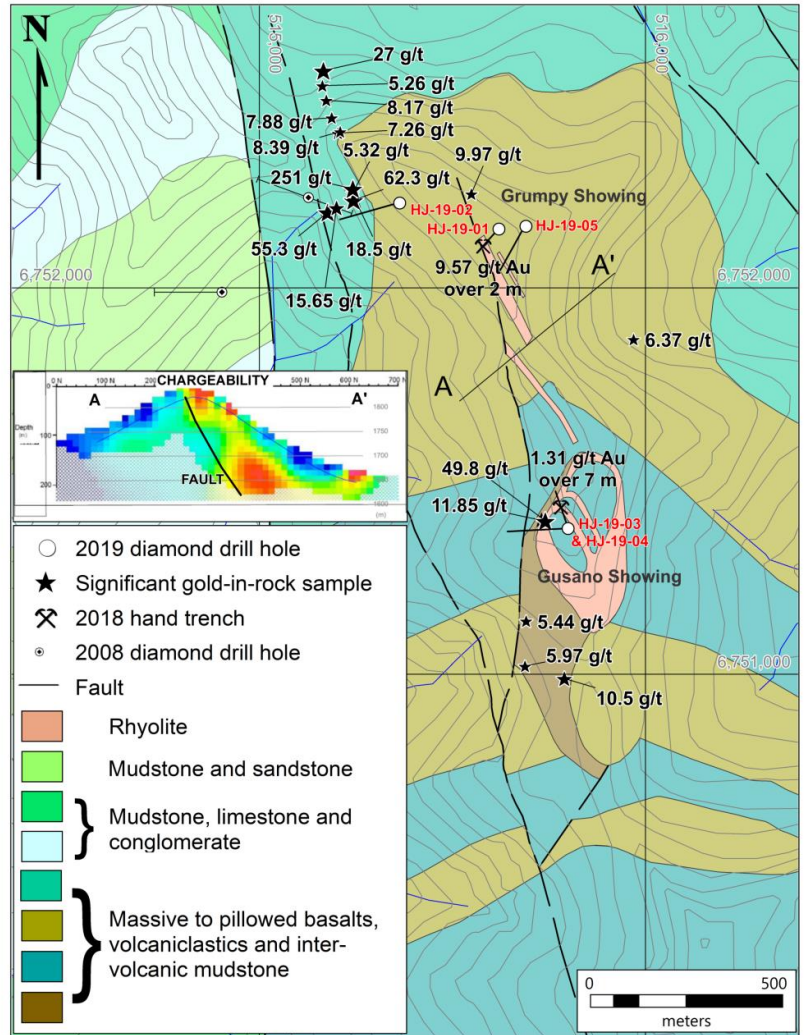
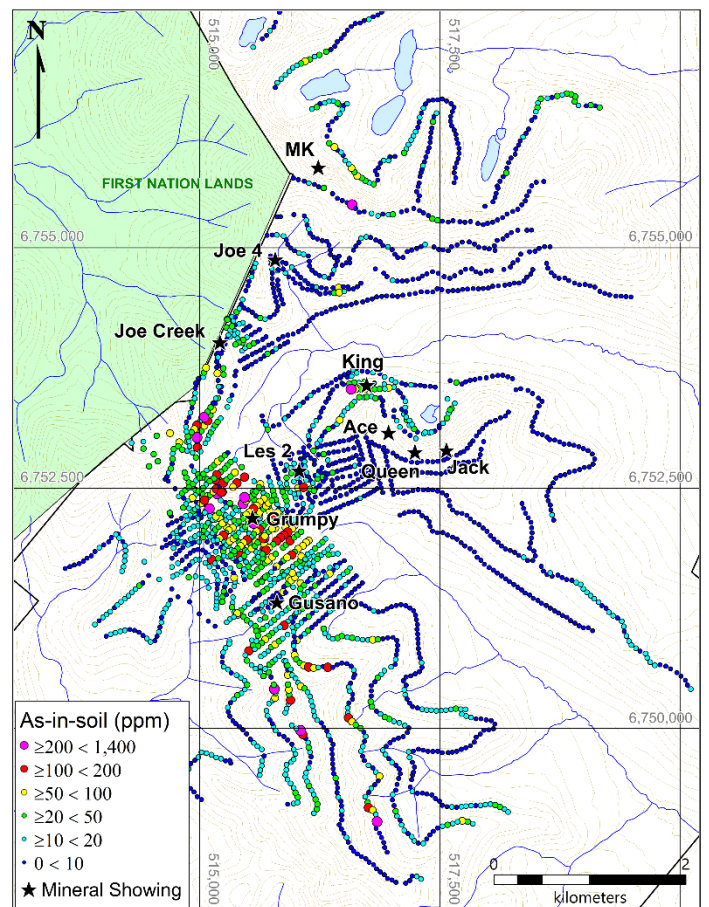
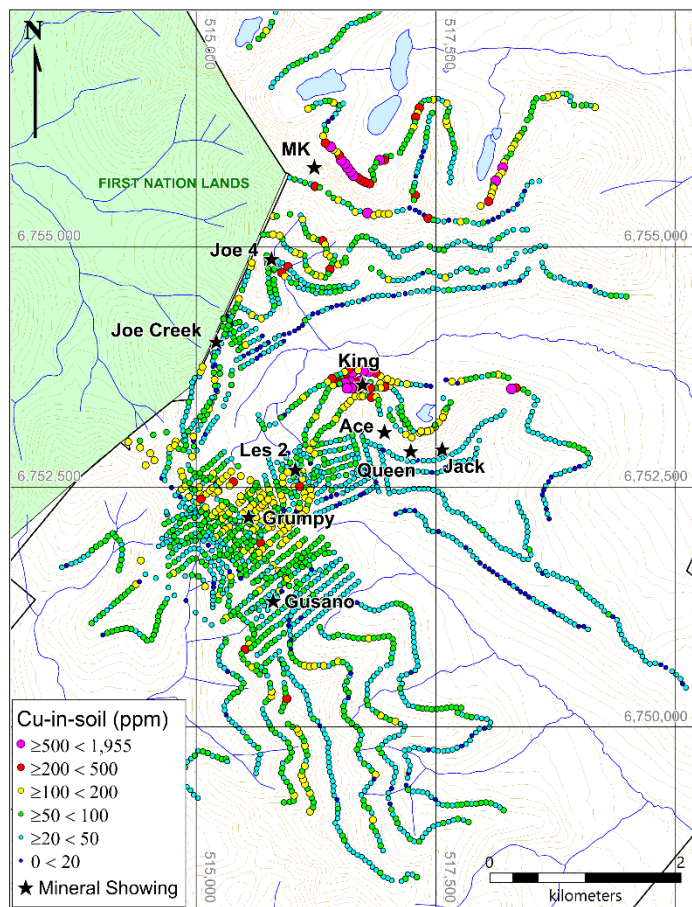
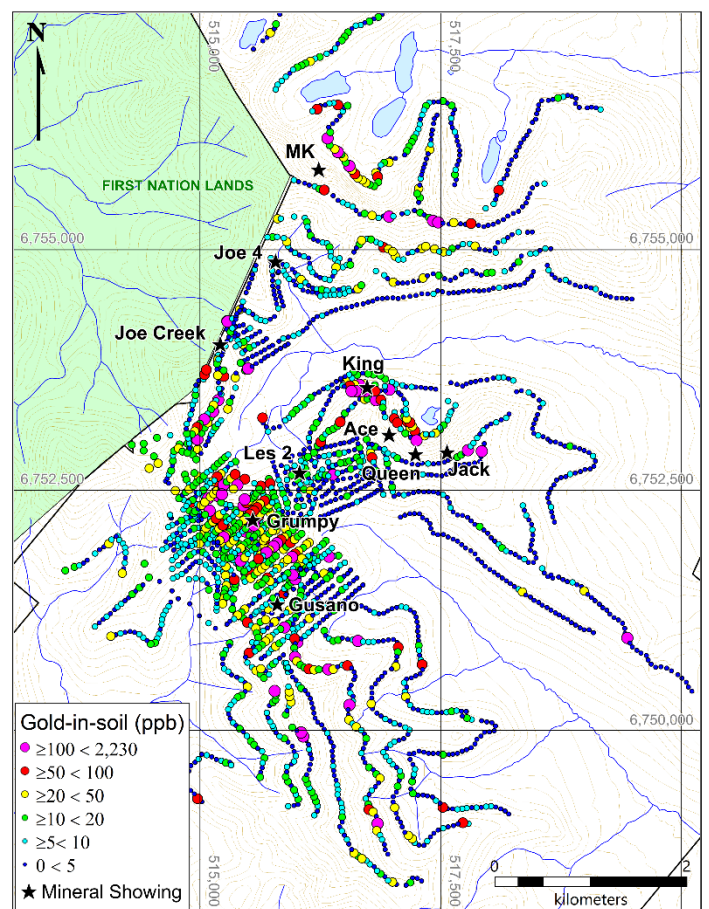
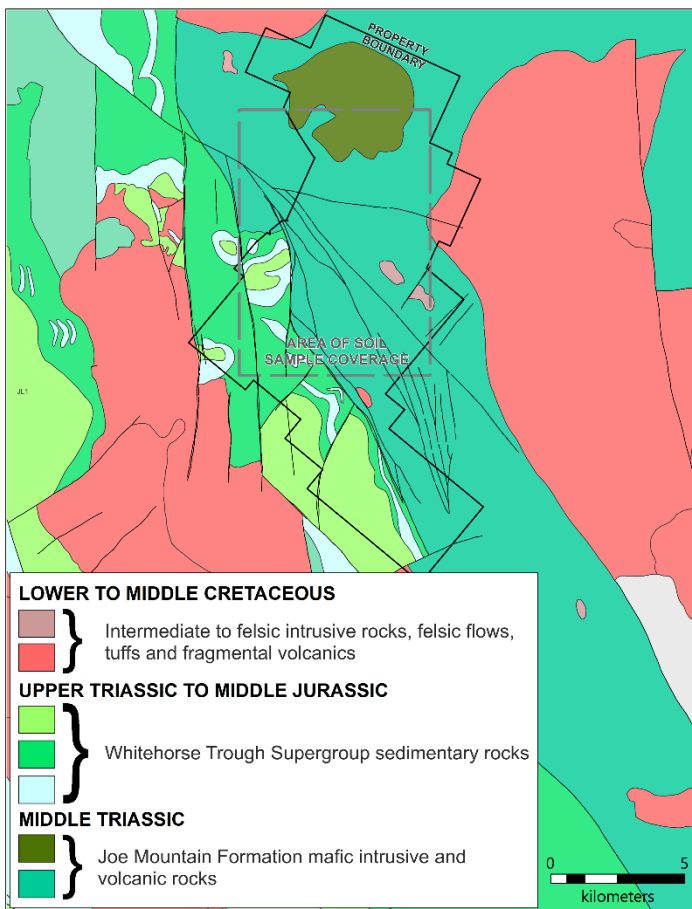


FIGURE 3 – 2019 DRILLING AND SAMPLE HIGHLIGHTS



FIGURES 4 TO 7 – BEDROCK GEOLOGY, GOLD-, COPPER- AND ARSENIC-IN-SOIL GEOCHEMISTRY

Following the 2018 discoveries, the Hartless Joe property was expanded by about 40%. Only a portion of the property has been soil sampled, with most sampling performed at a reconnaissance-scale. Soil geochemistry exhibits a north-south metal zonation, with stronger copper and zinc values toward the north and arsenic and lead enrichment toward the south. This lateral zonation may represent a hydrothermal fluid temperature gradient, or overprinting phases of mineralization.



DIAMOND DRILLING AT THE QUEEN SHOWING

The widespread distribution of bonanza-grade gold and silver showings make the Hartless Joe property the premier prospect in this under-explored portion of Stikinia.

Updated Jan. 2020

FOR MORE INFORMATION ON THIS PROPERTY

Contact Richard Drechsler
Phone: 604 687 2522
Email: rdrechsler@strategicmetalsltd.com

Doug Eaton
Phone: 604 688 2568
Email: info@nordacres.com
www.strategicmetalsltd.com

